



**ROCKET**  
RENTALS

JCB 245XR  
Tracked Excavator  
Specification Sheet

Rocket Rentals is a one stop shop for all  
your plant, access & tool hire needs.

[www.rocketrentals.co.uk](http://www.rocketrentals.co.uk)

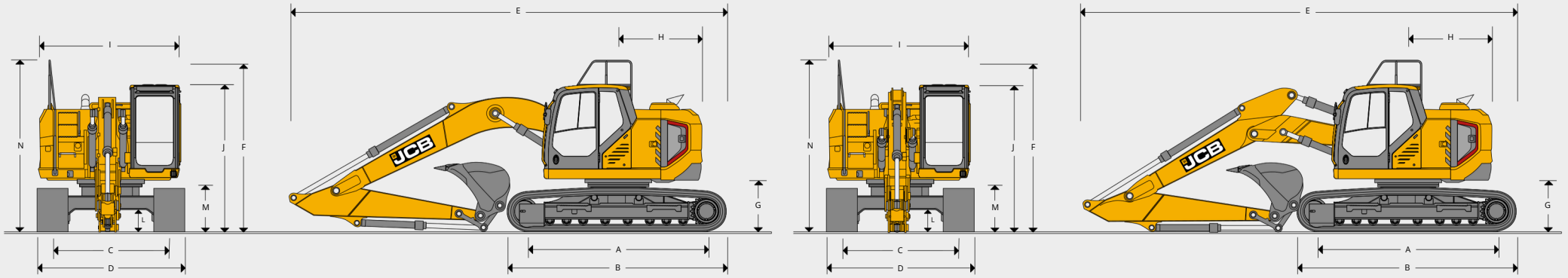
All of our JCB equipment is supplied by Holt JCB

HOLT JCB

**JCB**

# SPECIFICATION 245XR

## STATIC DIMENSIONS



## STATIC DIMENSIONS

Model		245 XR	
A	Track length on ground Undercarriage overall length	mm	3660
B	Track Gauge Width over tracks (600mm track shoes)	mm	4469
C	Width over tracks (700mm track shoes) Width over	mm	2390
D	tracks (800mm track shoes) Width over tracks (900mm	mm	2990
D	track shoes) Counterweight clearance Tail length Tail	mm	3090
D	swing radius Overall width of superstructure Overall	mm	3190
D	width of superstructure (with Cab Grab Handle) Height	mm	3290
G	over cab Ground clearance Track height Overall height of	mm	1069
H	upper structure with std. handrail Overall height to folded	mm	1720
H	handrail	mm	1720
I		mm	2889
I		mm	2912
J		mm	3031
L		mm	486
M		mm	899
N		mm	3537
N		mm	3092
		<b>Mono</b>	
<b>Dipper lengths</b>		<b>2.4m</b>	<b>3.0m</b>
E	Transport length	mm	9084
F	Transport height with Std Handrail	mm	3537
F	Transport height with Folding Handrail	mm	3127
		<b>T.A.B</b>	
<b>Dipper lengths</b>		<b>2.4m</b>	<b>3.0m</b>
E	Transport length	mm	9107
F	Transport height with Std Handrail	mm	3537
F	Transport height with Folding Handrail	mm	3152

## SPECIFICATION 245XR

ENGINE	
Model	JCB DieselMAX 448 Stage V
Type	4 stroke, 4 cylinder in-line, direct injection, turbocharged diesel
Rated Power	129kW (173 hp)
Piston Displacement	4.8 litres
Air Filtration	dry element with in cab warning indicator
Starting System	24 volt
Batteries	2 x 12 volt
Alternator	28 volt - 100 ampere
Maximum Torque	690 Nm @ 1500 rpm
Bore & Stroke	106 x 135mm

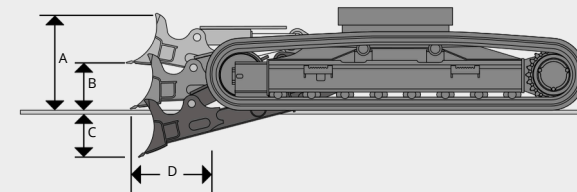
SWING SYSTEM	
Swing motor	Axial Piston type
Swing Brake	Hydraulic braking plus automatic spring applied disc type parking brake
Swing torque	81.5 kNm
Swing speed	10.4 rpm
Swing gear	Large diameter, internally toothed fully sealed grease bath lubricated.
Swing lock	switchable brake in cab

TRACK DRIVE	
Type	Travel Fully hydrostatic, two speed with autoshift
motors	Final Variable swash axial piston type, fully guarded within undercarriage frame
drive	Service Planetary reduction, bolt-on sprockets
brake	Park Hydraulic counter balance valve
brake	Disc type, spring applied, automatic hydraulic release
Gradeability	70% (35°) continuous
Travel speed	High - 5.7 km/h Low - 3.2 km/h
Tractive effort kN	207.5 kNm

SERVICE CAPACITIES			
Fuel tank	Litres		310
Engine coolant	Litres		27
Engine oil	Litres		20.4
Swing reduction gear	Litres		11
Track reduction gear (each side)	Litres		3.5
Hydraulic system	Litres		250
Hydraulic tank	Litres		120
DEF fluid capacity (if applic.)	Litres		31.4

HYDRAULIC SYSTEM	
<b>Pumps</b>	
Main pumps	2 variable displacement axial piston type
Maximum flow	2 x 228 l/min
Servo pump	Gear type
Servo pump maximum flow	16 l/min
<b>Control valve</b>	
A combined four and five spool control valve with auxiliary service spool as standard	
<b>Relief valve settings</b>	
Boom/Arm/Bucket	
With power boost	343 bar
Swing circuit	373 bar
Travel circuit	280 bar
Pilot control	343 bar
<b>Filtration</b>	39 bar
In tank	
Main return line	105 micron, suction strainer 10 micron,
Pilot line	glass fibre element 10 micron, glass fibre
Hydraulic hammer return	element 10 micron, reinforced microform
	element

## OPTIONAL BLADE



A	Blade Height	Blade lift	mm	600
B	above ground	Blade cut	mm	500
C	below ground	Blade	mm	360
D	forward of track	Dozer	mm	567
	width - (600mm)	Dozer	mm	2990
	width - (700mm)		mm	3110

Additional machine weight with blade		
600mm tracks	kg	1588
700mm tracks	kg	1602

SOUND LEVEL	
Sound level in cab according to ISO 6396	69 dB LpA
External sound level according to ISO 6395 and EU Directive 2000/14/EC	102 dB LwA

# SPECIFICATION 245XR

UNDERCARRIAGE				
Carriage options	LC - Long Carriage			
Construction	Fully welded 'X' frame type with central bellyguarding and sloping side members with dirt relief holes under top rollers			
Recovery point	Front and rear			
Upper & lower rollers	Heat treated sealed and lubricated			
Track adjustment	Grease cylinder type			
Track idler	Sealed and lubricated, with spring cushioned recoil			
Track type	Sealed and lubricated			
Track shoes (mm)	600mm	700mm	800mm	900mm
	LC			
No. of upper rollers	2			
No. of lower rollers	8			
No. of track guides (option)	2 or Full			
No. of track shoes	49			

## BUCKET AND ARM COMBINATION 245XR

Bucket options	GP Buckets								HD Buckets							
	width	capacity	mm	610	762	915	1067	1219	1372	1524	750	900	1100	1200	1350	1500
Bucket weight			m <sup>3</sup>	0.35	0.51	0.66	0.81	0.96	1.11	1.27	0.52	0.66	0.81	0.96	1.11	1.25
<b>245XR LC Mono</b>			kg	479	531	589	644	715	772	842	610	691	752	813	894	955
2.4m Quickhitch (No Quickhitch)																
3.0m Quickhitch (No Quickhitch)																
<b>245XR LCD Mono</b>																
2.4m Quickhitch (No Quickhitch)																
3.0m Quickhitch (No Quickhitch)																
<b>245XR LC TAB</b>																
2.4m Quickhitch (No Quickhitch)																
3.0m Quickhitch (No Quickhitch)																
<b>245XR LCD TAB</b>																
2.4m Quickhitch (No Quickhitch)																
3.0m Quickhitch (No Quickhitch)																

☐ = Suitable for general excavating material weight up to 2000 kg/m<sup>3</sup>.

☐ = Suitable for grading and loading material weight up to 1600 kg/m<sup>3</sup>.

☐ = Suitable for light excavating material weight up to 1200 kg/m<sup>3</sup>.

X = Not recommended.

These recommendations are given as a guide based on typical operating conditions.

Please contact your distributor for the correct selection of buckets and attachments to suit the application.

## SPECIFICATION 245XR

### WEIGHTS AND GROUND BEARING PRESSURES

Figures include: 1.1m<sup>3</sup> bucket 772kg, operator 75kg, full fuel tank and 2.4m dipper

		Track shoe options			
		600mm STD	700mm STD	800mm STD	900mm STD
<b>245XR LC MonoBoom</b>					
Machine weight	kg	25023	25292	25579	25848
Ground bearing pressure	kg/cm <sup>2</sup>	0.50	0.43	0.38	0.34
<b>245XR LC MonoBoom Dozer</b>					
Machine weight	kg	26632	26915	-	-
Ground bearing pressure	kg/cm <sup>2</sup>	0.53	0.46	-	-
		600mm HD	700mm HD	800mm HD	900mm HD
<b>245XR LC MonoBoom</b>					
Machine weight	kg	25284	25603	25941	26261
Ground bearing pressure	kg/cm <sup>2</sup>	0.50	0.44	0.39	0.35
<b>245XR LC MonoBoom Dozer</b>					
Machine weight	kg	26893	27226	-	-
Ground bearing pressure	kg/cm <sup>2</sup>	0.54	0.47	-	-
Figures include: 1.1m <sup>3</sup> bucket 772kg, operator 75kg, full fuel tank and 3.0m dipper					
		600mm STD	700mm STD	800mm STD	900mm STD
<b>245XR LC MonoBoom</b>					
Machine weight	kg	25095	25365	25652	25920
Ground bearing pressure	kg/cm <sup>2</sup>	0.50	0.43	0.38	0.34
<b>245XR LC MonoBoom Dozer</b>					
Machine weight	kg	26704	26987	-	-
Ground bearing pressure	kg/cm <sup>2</sup>	0.53	0.46	-	-
		600mm HD	700mm HD	800mm HD	900mm HD
<b>245XR LC MonoBoom</b>					
Machine weight	kg	25356	25676	26014	26333
Ground bearing pressure	kg/cm <sup>2</sup>	0.51	0.44	0.39	0.35
<b>245XR LC MonoBoom Dozer</b>					
Machine weight	kg	26965	27299	-	-
Ground bearing pressure	kg/cm <sup>2</sup>	0.54	0.47	-	-

### WEIGHTS AND GROUND BEARING PRESSURES

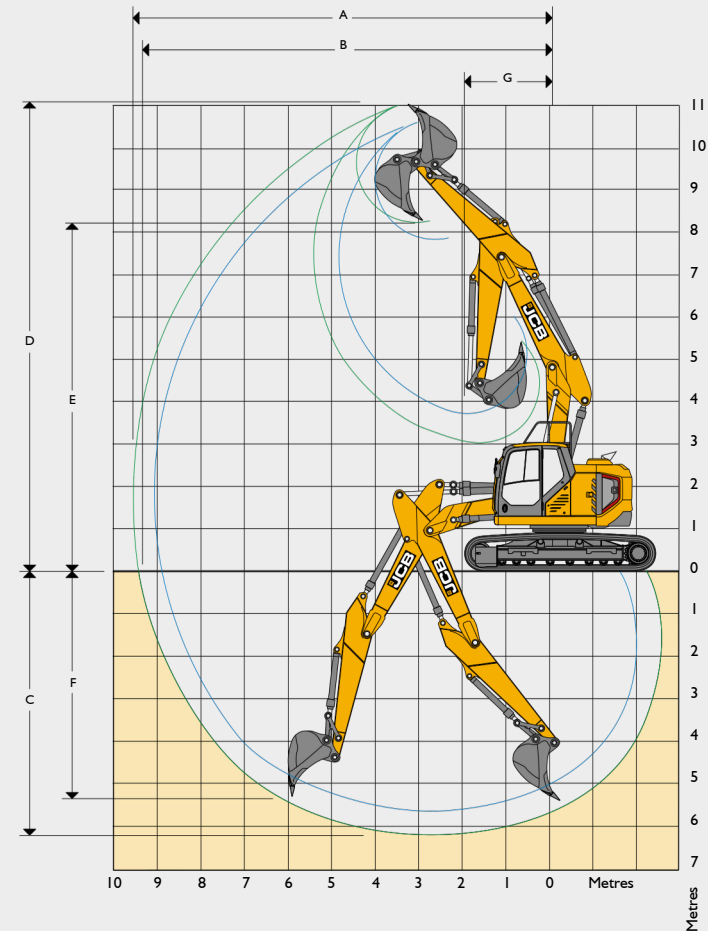
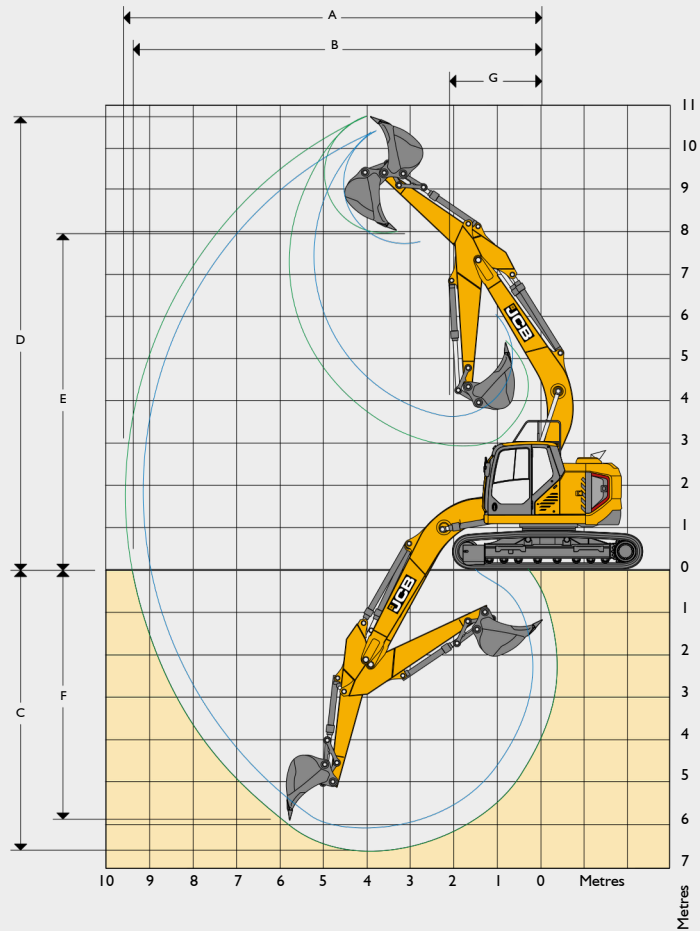
Figures include: 1.1m<sup>3</sup> bucket 772kg, operator 75kg, full fuel tank and 2.4m dipper

		Track shoe options			
		600mm STD	700mm STD	800mm STD	900mm STD
<b>245XR LC T.A.B.</b>					
Machine weight	kg	25733	26003	26290	26558
Ground bearing pressure	kg/cm <sup>2</sup>	0.51	0.44	0.39	0.35
<b>245XR LC T.A.B. Dozer</b>					
Machine weight	kg	27342	27626	-	-
Ground bearing pressure	kg/cm <sup>2</sup>	0.55	0.47	-	-
		600mm HD	700mm HD	800mm HD	900mm HD
<b>245XR LC T.A.B.</b>					
Machine weight	kg	25994	26314	26652	26971
Ground bearing pressure	kg/cm <sup>2</sup>	0.52	0.45	0.40	0.36
<b>245XR LC T.A.B. Dozer</b>					
Machine weight	kg	27603	27937	-	-
Ground bearing pressure	kg/cm <sup>2</sup>	0.55	0.48	-	-
Figures include: 1.1m <sup>3</sup> bucket 772kg, operator 75kg, full fuel tank and 3.0m dipper					
		600mm STD	700mm STD	800mm STD	900mm STD
<b>245XR LC T.A.B.</b>					
Machine weight	kg	25806	26075	26362	26631
Ground bearing pressure	kg/cm <sup>2</sup>	0.51	0.45	0.39	0.35
<b>245XR LC T.A.B. Dozer</b>					
Machine weight	kg	27414	27698	-	-
Ground bearing pressure	kg/cm <sup>2</sup>	0.55	0.47	-	-
		600mm HD	700mm HD	800mm HD	900mm HD
<b>245XR LC T.A.B.</b>					
Machine weight	kg	26067	26386	26724	27044
Ground bearing pressure	kg/cm <sup>2</sup>	0.52	0.45	0.40	0.36
<b>245XR LC T.A.B. Dozer</b>					
Machine weight	kg	27675	28009	-	-
Ground bearing pressure	kg/cm <sup>2</sup>	0.55	0.48	-	-

# SPECIFICATION 245XR

WORKING RANGE		245XR LC MONO	
<b>Dipper length:</b>		<b>2.4m</b>	<b>3.0m</b>
A	Maximum digging reach	mm 9423	9952
B	Maximum digging reach (on ground)	mm 9244	9784
C	Maximum digging depth	mm 6029	6627
D	Maximum digging height	mm 10354	10708
E	Maximum dumping height	mm 7593	7951
F	Maximum vertical wall cut depth	mm 5459	6011
G	Minimum swing radius	mm 2566	2345
	Bucket rotation	degrees 183	183
	Maximum dipper tearout	kN 125	103
	Maximum bucket tearout	kN 148	148
	Bucket used for calculations	980/B0090	

WORKING RANGE		245XR LC TAB	
<b>Dipper length:</b>		<b>2.4m</b>	<b>3.0m</b>
A	Maximum digging reach	mm 9472	10009
B	Maximum digging reach (on ground)	mm 9295	9841
C	Maximum digging depth	mm 5619	6200
D	Maximum digging height	mm 10 615	11 013
E	Maximum dumping height	mm 7827	8228
F	Maximum vertical wall cut depth	mm 4749	5326
G	Minimum swing radius	mm 2500	2206
	Bucket rotation	degrees 183	183
	Maximum dipper tearout	kN 125	103
	Maximum bucket tearout	kN 148	148
	Bucket used for calculations	980/B0090	



## SPECIFICATION 245XR

### WEIGHTS AND GROUND BEARING PRESSURES

Figures include: 1.1m<sup>3</sup> bucket 772kg, operator 75kg, full fuel tank and 2.4m dipper

		Track shoe options			
		600mm STD	700mm STD	800mm STD	900mm STD
<b>245XR LC MonoBoom</b>					
Machine weight	kg	25023	25292	25579	25848
Ground bearing pressure	kg/cm <sup>2</sup>	0.50	0.43	0.38	0.34
<b>245XR LC MonoBoom Dozer</b>					
Machine weight	kg	26632	26915	-	-
Ground bearing pressure	kg/cm <sup>2</sup>	0.53	0.46	-	-
		600mm HD	700mm HD	800mm HD	900mm HD
<b>245XR LC MonoBoom</b>					
Machine weight	kg	25284	25603	25941	26261
Ground bearing pressure	kg/cm <sup>2</sup>	0.50	0.44	0.39	0.35
<b>245XR LC MonoBoom Dozer</b>					
Machine weight	kg	26893	27226	-	-
Ground bearing pressure	kg/cm <sup>2</sup>	0.54	0.47	-	-
Figures include: 1.1m <sup>3</sup> bucket 772kg, operator 75kg, full fuel tank and 3.0m dipper					
		600mm STD	700mm STD	800mm STD	900mm STD
<b>245XR LC MonoBoom</b>					
Machine weight	kg	25095	25365	25652	25920
Ground bearing pressure	kg/cm <sup>2</sup>	0.50	0.43	0.38	0.34
<b>245XR LC MonoBoom Dozer</b>					
Machine weight	kg	26704	26987	-	-
Ground bearing pressure	kg/cm <sup>2</sup>	0.53	0.46	-	-
		600mm HD	700mm HD	800mm HD	900mm HD
<b>245XR LC MonoBoom</b>					
Machine weight	kg	25356	25676	26014	26333
Ground bearing pressure	kg/cm <sup>2</sup>	0.51	0.44	0.39	0.35
<b>245XR LC MonoBoom Dozer</b>					
Machine weight	kg	26965	27299	-	-
Ground bearing pressure	kg/cm <sup>2</sup>	0.54	0.47	-	-

### WEIGHTS AND GROUND BEARING PRESSURES

Figures include: 1.1m<sup>3</sup> bucket 772kg, operator 75kg, full fuel tank and 2.4m dipper

		Track shoe options			
		600mm STD	700mm STD	800mm STD	900mm STD
<b>245XR LC T.A.B.</b>					
Machine weight	kg	25733	26003	26290	26558
Ground bearing pressure	kg/cm <sup>2</sup>	0.51	0.44	0.39	0.35
<b>245XR LC T.A.B. Dozer</b>					
Machine weight	kg	27342	27626	-	-
Ground bearing pressure	kg/cm <sup>2</sup>	0.55	0.47	-	-
		600mm HD	700mm HD	800mm HD	900mm HD
<b>245XR LC T.A.B.</b>					
Machine weight	kg	25994	26314	26652	26971
Ground bearing pressure	kg/cm <sup>2</sup>	0.52	0.45	0.40	0.36
<b>245XR LC T.A.B. Dozer</b>					
Machine weight	kg	27603	27937	-	-
Ground bearing pressure	kg/cm <sup>2</sup>	0.55	0.48	-	-
Figures include: 1.1m <sup>3</sup> bucket 772kg, operator 75kg, full fuel tank and 3.0m dipper					
		600mm STD	700mm STD	800mm STD	900mm STD
<b>245XR LC T.A.B.</b>					
Machine weight	kg	25806	26075	26362	26631
Ground bearing pressure	kg/cm <sup>2</sup>	0.51	0.45	0.39	0.35
<b>245XR LC T.A.B. Dozer</b>					
Machine weight	kg	27414	27698	-	-
Ground bearing pressure	kg/cm <sup>2</sup>	0.55	0.47	-	-
		600mm HD	700mm HD	800mm HD	900mm HD
<b>245XR LC T.A.B.</b>					
Machine weight	kg	26067	26386	26724	27044
Ground bearing pressure	kg/cm <sup>2</sup>	0.52	0.45	0.40	0.36
<b>245XR LC T.A.B. Dozer</b>					
Machine weight	kg	27675	28009	-	-
Ground bearing pressure	kg/cm <sup>2</sup>	0.55	0.48	-	-

# SPECIFICATION 245XR

## STANDARD/OPTIONAL EQUIPMENT

ENGINE		CAB & INTERIOR		HYDRAULIC SYSTEM	
JCB, Stage V compliant, SCR, water cooled diesel turbocharged after cooled electronic 4 cylinder 4.8 litre engine	•	Sound-insulated and 4 dual shock mounted cab	•	Boom and arm flow regeneration	•
One touch idle	•	Mechanical suspension seat	•	One touch power boost	•
Auto-idle function	•	Heater	•	Boom/slew priority control	•
Automatic engine shutdown	•	Opening front window and removable lower front window	•	Cushion control	•
Fan guard	•	Upper door sliding glass in 2 directions	•	Cylinder cushioning and contamination seals	•
Heavy-duty batteries	•	Upper windscreen wiper	•	2 speed track motors	•
Fuel filter with sedimenter	•	4 button joysticks	•	Oil cooler	•
Electronic engine control	•	Travel pedals and T handle levers	•	10 attachment settings through the display	•
Fuel cooler	•	2 foot rests	•	High, merged, medium and low flow options (shut off taps as standard)	+
Refuelling pump with inline filter	+	Immobiliser	•	Advanced tool select to control flow and pressure	+
Fuel filter for refuelling pump	•	Loudspeakers and connection for radio	•	Proportional control joystick sliders with electronic foot pedal	+
<b>SAFETY</b>		Standard cab filtration	•	Bio oil	+
Side guard rails on upper structure and steps	•	Electric dual tone horn	•	Panolin oil	+
Twin camera	•	Interior cab light	•	Quickhitch pipework	+
Battery isolator	•	3 x 12v sockets	•	Hydraulic quickhitch	+
Key	•	7" colour monitor	•	ISO/SAE change over	+
Lockable fuel tank cap	•	Retractable 2" seat belt	•	SAE to BSP converters on high flow auxiliary pipework	+
Lockable hydraulic tank cap	•	Fixed roof glass	•	Quick release couplings	+
Work lights (2 revolving frame, 2 boom mounted)	•	Roof blind	•	Hose burst check valves (boom, arm & bucket)	+
Roll over protective structure (ROPS)	•	Cool box	•	Auxiliary vent to tank	+
Travel alarm	•	Cup holder	•	Attachment case drain	+
Additional light options (Levels 2 & 3 available in halogen or LED)	+	Climate control	•	Steelwrist ready	+
White noise alarm	+	Rear window blind	+	<b>DIG END</b>	
Green beacon linked to seat belt	+	3" seat belt	+	Grouped greasing	•
FOPS Level II guard top and front	+	2" hi vis seat belt	+	Dippers 2.4m, 3.0m	+
Fire extinguisher (1kg powder)	+	3" hi vis seat belt	+	HD dipper 2.4m, 3.0m	+
Vandal guards	+	Front blind	+	Lifting hook tipping link	+
Chevron counterweight	+	Side window blind	+	Lifting shackle tipping link	+
Rotating roof beacon	+	Opening roof hatch	+	Bucket ram guard	+
2 x counterweight beacons	+	Bluetooth radio (linked to pod controls and screen)	+	Triple articulated boom	+
360 degree camera	+	Carbon air filter	+	Guards for boom mounted lights	+
Folding handrails	+	Deluxe seat: Heated, adjustable air suspension seat with adjustable headrest mechanical lumbar support	+	<b>OTHER</b>	
Full upper surrounding handrails	+	Super deluxe seat: Heated and air ventilation, adjustable air suspension seat with adjustable head rest and electric lumbar support	+	Hour meter	•
Arm limiter	+	Rain guard visor	+	Wide core radiators	•
		Dual front wiper	+	LiveLink telematics	•
		<b>UNDERCARRIAGE</b>		HD slew bearing seal	•
		Greased and sealed track links		10mm heavy-duty plates for upper and lower structure	+
		Twin track guards	•	Pleated radiator flyscreen	+
		Full length track guards	•	Work light guards	+
		500, 600, 700, 800, 900 mm triple grouser shoe	+	Service bay and access lighting	+
		Dozer for LC carriage 600mm or 700mm tracks	+	GPS ready	+
			+		

STANDARD •

OPTIONAL +



Proud to stock a number of JCB ranges including:

TRACKED EXCAVATORS

TELEHANDLERS

SITE DUMPERS

TANDEM ROLLERS

GENERATORS

**ROCKET**  
RENTALS

For more information, visit our website at [www.rocketrentals.co.uk](http://www.rocketrentals.co.uk)

For plant hire services in the Gloucester area, get in touch with the team at Rocket Rentals Ltd. on:

Plant and Access Hire  
01453 51 95 51  
[hire@rocketrentals.co.uk](mailto:hire@rocketrentals.co.uk)

Tool Hire  
01453 51 94 51

Accounts  
01453 51 95 51  
[accounts@rocketrentals.co.uk](mailto:accounts@rocketrentals.co.uk)