



ROCKET
RENTALS

JCB 145XR
Tracked Excavator
Specification Sheet

Rocket Rentals is a one stop shop for all
your plant, access & tool hire needs.

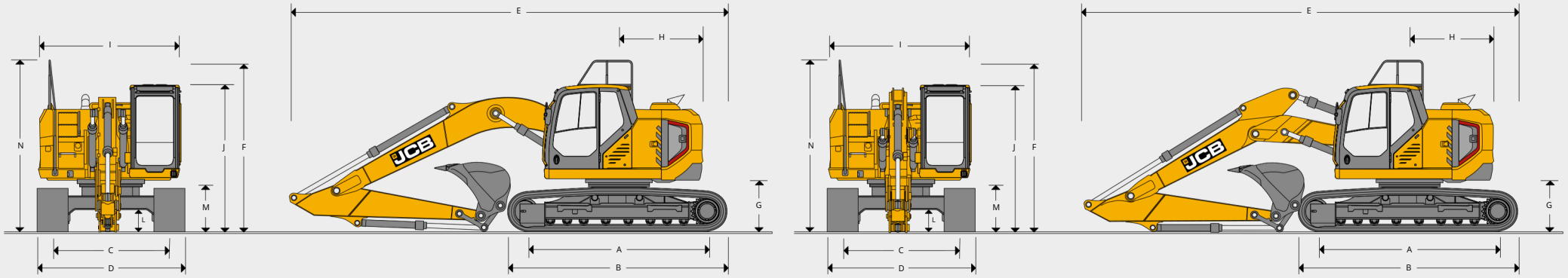
www.rocketrentals.co.uk

All of our JCB equipment is supplied by Holt JCB

HOLT JCB



STATIC DIMENSIONS



STATIC DIMENSIONS

Model		I45 XR						
Undercarriage variant		LC			HD			
A	Track length on ground Undercarriage overall length	mm	2865			3170		
B	Track Gauge Width over tracks (500mm track shoes)	mm	3590			3967		
C	Width over tracks (600mm track shoes) Width over	mm	1990			2200		
D	tracks (700mm track shoes) Width over tracks (800mm	mm	2490			-		
D	track shoes) Width over tracks (850mm track shoes)	mm	2590			2800		
D	Width over tracks (900mm track shoes) Counterweight	mm	2690			2900		
D	clearance Tail swing radius / Tail length Overall width of	mm	-			3000		
D	superstructure Overall width of superstructure (with cab	mm	2840			-		
D	grab handle) Height over cab Ground clearance Track	mm	-			3100		
G	height Overall height of upper structure with standard	mm	920			1019		
H	handrail	mm	1565			1565		
I		mm	2500			2500		
I		mm	2523			2523		
J		mm	2863			2962		
L		mm	426			472		
M		mm	810			897		
N		mm	3096			3195		
		Monoboomb						
Dipper lengths			2.5m	2.7m	3.0m	2.5m	2.7m	3.0m
E	Transport length	mm	7328	7357	7316	7450	7508	7483
F	Transport height with standard handrail	mm	3096	3096	3190	3195	3195	3195
		T.A.B						
Dipper lengths			2.5m	2.7m	3.0m	2.5m	2.7m	3.0m
E	Transport length	mm	7610	7563	7475	7762	7732	7656
F	Transport height with standard handrail	mm	3096	3096	3135	3195	3195	3195

ENGINE	
Model	JCB DieselMAX 448 Stage V
Type	4 Stroke, 4 cylinder in-line, direct injection, turbocharged diesel
Rated power	81kW (109hp)
Piston displacement	4.8 litres
Air filtration	Dry element with secondary safety element and in cab warning indicator
Starting system	24 volt
Batteries	2 x 12 volt
Alternator	28 volt - 100 ampere
Maximum torque	516 N m
Bore & stroke	106mm x 112mm

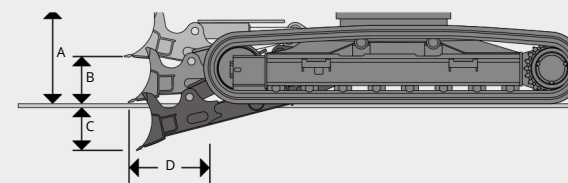
SWING SYSTEM	
Swing motor	Axial piston type
Swing brake	Hydraulic braking plus automatic spring applied disc type parking brake
Swing torque	36kNm
Swing speed	13.2rpm
Swing gear	Large diameter, internally toothed fully sealed great bath lubricated.
Swing lock	Switchable brake in cab

TRACK DRIVE		
Type	Fully hydrostatic, two speed with autoshift	
Travel motors	Variable swash axial piston type, fully guarded with undercarriage frame	
Final drive	Planetary reduction, bolt-on sprockets	
Service brake	Hydraulic counterbalance valve	
Park brake	Disc-type, spring applied, automatic hydraulic release	
Gradeability	70% (35 degree) continuous	
	LC	HD
Travel speed	High - 5.3 km/h Low - 3.1 km/h	High - 4.3 km/h Low - 2.5 km/h
Tractive effort	127.5 kN	154.3kN

SERVICE CAPACITIES		
Engine oil	litres	21
Swing reduction gear	litres	3.2
Track reduction gear	litres	2.1L (Standard) 4L (HD)
Hydraulic tank	litres	74
DEF fluid capacity	litres	18

HYDRAULIC SYSTEM	
Pumps	
Main pumps	2 variable displacement axial piston type
Maximum flow	2x131 l/min
Servo pump	Gear type
Servo pump maximum flow	17 l/min
Control valve	
A combined four and five spool control valve with auxiliary service spool as standard	
Relief valve settings	
Boom/Arm/Bucket	
With power boost	314 bar
Swing circuit	343 bar
Travel circuit	279 bar
Pilot control	343 bar
Filtration	
In tank	
Main return line	105 micron, suction strainer
Pilot line	10 micron, glass fibre element
Hydraulic hammer return	15 micron, glass fibre element
	10 micron, glass fibre element

OPTIONAL BLADE



A	Blade Height	Blade lift	mm	847
B	above ground	Blade cut	mm	990
C	below ground	Blade	mm	516
D	forward of track	Dozer	mm	418
	width - (500mm)	Dozer	mm	2490
	width - (600mm)	Dozer	mm	2610
	width - (700mm)		mm	2710

Additional machine weight with blade		
500mm tracks	kg	796
600mm tracks	kg	904
700mm tracks	kg	911

SOUND LEVEL	
Sound level in cab according to ISO 6396	68 dB LpA
External sound level according to ISO 6395 and EU Directive 2000/14/EC	101 dB LwA

BUCKET AND ARM COMBINATION - MONOBOOM

Bucket options	GP Bucket						HD Bucket						
Bucket width	mm	457	610	762	915	1067	1219	600	700	800	1000	1200	1300
Bucket capacity	m ³	0.23	0.3	0.42	0.54	0.66	0.78	0.35	0.42	0.5	0.66	0.81	0.89
Bucket weight	kg	284	308	346	394	442	478	336	364	402	455	520	547
		98 0/A 0 4 01	980/A0402	980/A0403	980/B0082	980/A0408	980/A0406	980/A9188	980/A9189	980/A9190	980/A9191	980/A9192	980/A9193
LC													
2.5m Quickhitch (No Quickhitch)		☐	☐	☐	☐	☐	☐	☐	☐	☐	☐	☐	☐ (☐)
2.7m Quickhitch (No Quickhitch)		(☐)	(☐)	(☐)	(☐)	(☐)	(☐)	(☐)	(☐)	(☐)	(☐)	(☐)	☐ (☐)
3.0m Quickhitch (No Quickhitch)		☐	☐	☐	☐	☐	☐	☐	☐	☐	☐	☐	☐ (☐)
LC Dozer													
2.5m Quickhitch (No Quickhitch)		☐	☐	☐	☐	☐	☐	☐	☐	☐	☐	☐	☐ (☐)
2.7m Quickhitch (No Quickhitch)		(☐)	(☐)	(☐)	(☐)	(☐)	(☐)	(☐)	(☐)	(☐)	(☐)	(☐)	☐ (☐)
3.0m Quickhitch (No Quickhitch)		☐	☐	☐	☐	☐	☐	☐	☐	☐	☐	☐	☐ (☐)
HD													
2.5m Quickhitch (No Quickhitch)		☐	☐	☐	☐	☐	☐	☐	☐	☐	☐	☐	☐
2.7m Quickhitch (No Quickhitch)		(☐)	(☐)	(☐)	(☐)	(☐)	(☐)	(☐)	(☐)	(☐)	(☐)	(☐)	(☐)
3.0m Quickhitch (No Quickhitch)		☐	☐	☐	☐	☐	☐	☐	☐	☐	☐	☐	☐
		(☐)	(☐)	(☐)	(☐)	(☐)	(☐)	(☐)	(☐)	(☐)	(☐)	(☐)	(☐)

BUCKET AND ARM COMBINATION - T.A.B

Bucket options	GP Bucket						HD Bucket						
Bucket width	mm	457	610	762	915	1067	1219	600	700	800	1000	1200	1300
Bucket capacity	m ³	0.23	0.3	0.42	0.54	0.66	0.78	0.35	0.42	0.5	0.66	0.81	0.89
Bucket weight	kg	284	308	346	394	442	478	336	364	402	455	520	547
		98 0/A 0 4 01	980/A0402	980/A0403	980/B0082	980/A0408	980/A0406	980/A9188	980/A9189	980/A9190	980/A9191	980/A9192	980/A9193
LC													
2.5m Quickhitch (No Quickhitch)		☐	☐	☐	☐	☐	☐	☐	☐	☐	☐	☐	☐
2.7m Quickhitch (No Quickhitch)		(☐)	(☐)	(☐)	(☐)	(☐)	(☐)	(☐)	(☐)	(☐)	(☐)	(☐)	(☐)
3.0m Quickhitch (No Quickhitch)		☐	☐	☐	☐	☐	☐	☐	☐	☐	☐	☐	☐
LC Dozer													
2.5m Quickhitch (No Quickhitch)		☐	☐	☐	☐	☐	☐	☐	☐	☐	☐	☐	☐
2.7m Quickhitch (No Quickhitch)		(☐)	(☐)	(☐)	(☐)	(☐)	(☐)	(☐)	(☐)	(☐)	(☐)	(☐)	(☐)
3.0m Quickhitch (No Quickhitch)		☐	☐	☐	☐	☐	☐	☐	☐	☐	☐	☐	☐
HD													
2.5m Quickhitch (No Quickhitch)		☐	☐	☐	☐	☐	☐	☐	☐	☐	☐	☐	☐
2.7m Quickhitch (No Quickhitch)		(☐)	(☐)	(☐)	(☐)	(☐)	(☐)	(☐)	(☐)	(☐)	(☐)	(☐)	(☐)
3.0m Quickhitch (No Quickhitch)		☐	☐	☐	☐	☐	☐	☐	☐	☐	☐	☐	☐
		(☐)	(☐)	(☐)	(☐)	(☐)	(☐)	(☐)	(☐)	(☐)	(☐)	(☐)	(☐)
		☐	☐	☐	☐	☐	☐	☐	☐	☐	☐	☐	☐

☐ = Suitable for general excavating materials up to 2000kg/m³.
 (☐) = Suitable for grading and loading materials up to 1600kg/m³.
 ☐ = Suitable for light excavating materials up to 1200kg/m³.

These recommendations are given as a guide based on typical operating conditions.
 Please contact your distributor for the correct selection of buckets and attachments to suit the application.

UNDERCARRIAGE							
Construction	Fully welded 'X' frame type with central belly guarding and sloping side members with dirt relief holes under top rollers						
Recovery point	Front and rear						
Upper and lower rollers	Heat treated, sealed and lubricated						
Track adjustment	Grease cylinder type						
Track idler	Sealed and lubricated, with spring cushioned recoil						
Track type	Sealed and lubricated						
Track shoe options	500mm	600mm	700mm	800mm	850mm	900mm	
	LC	LC	LC		LC		
		HD	HD	HD		HD	
	LC			HD			
No. of upper rollers	2			2			
No. of lower rollers	7			7			
No. of track guides (option)	1 or 2			1 or 2			
No. of track shoes	44			43			

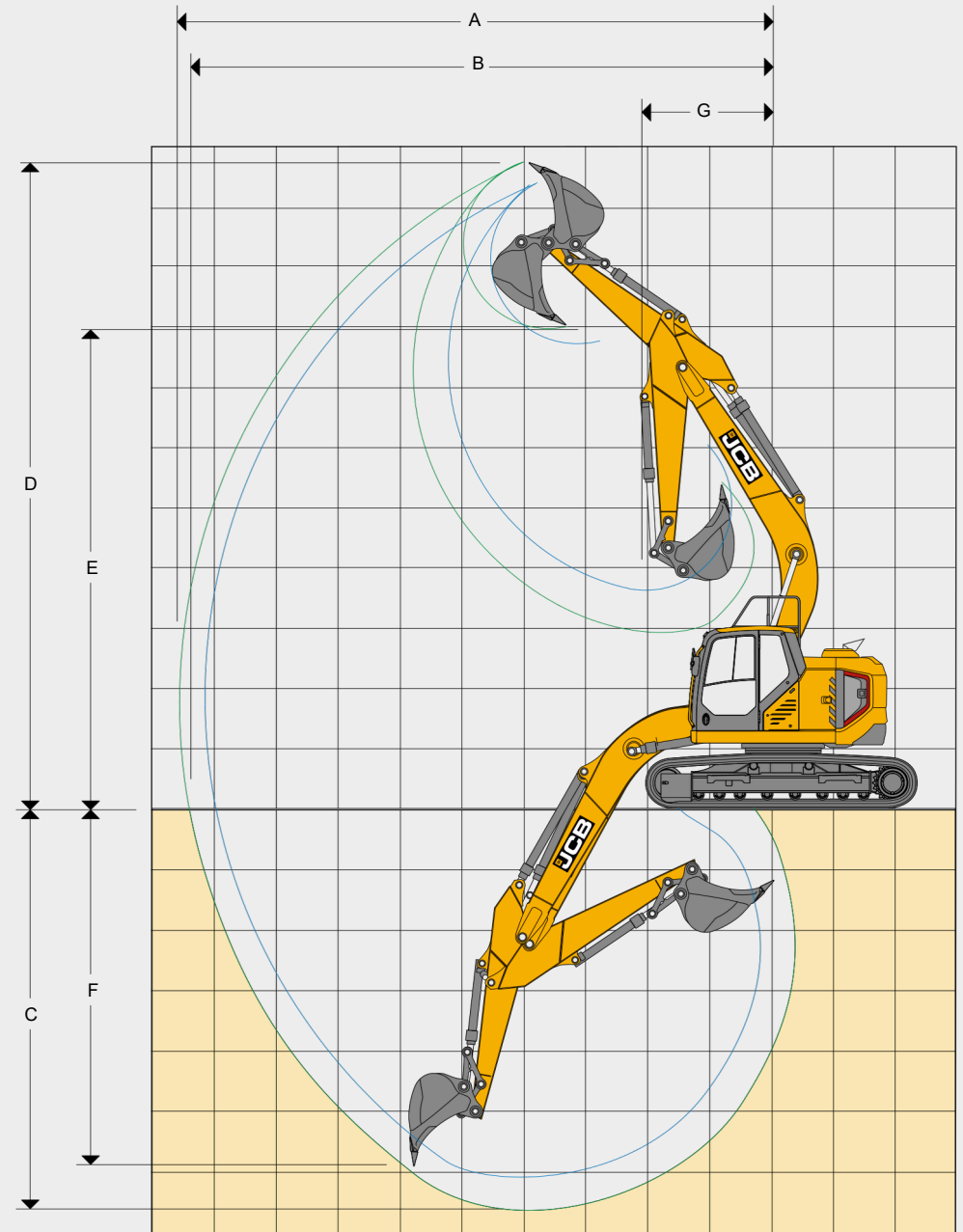
WEIGHTS AND GROUND BEARING PRESSURES							
0.59m ³ bucket 442kg, operator 75kg, full fuel tank and 3.0m dipper, quarry handrail & ROPS/FOPS Guards							
Track Shoe options							
	500mm	600mm	700mm	800mm	850mm	900mm	
LC MonoBoom							
Machine weight	kg	15 643	15847	16048	-	16366	-
Ground bearing pressure	kg/cm ²	0.55	0.46	0.4	-	0.34	-
LC T.A.B.							
Machine weight	kg	16142	16346	16547	-	16885	-
Ground bearing pressure	kg/cm ²	0.56	0.48	0.41	-	0.35	-
LC MonoBoom							
Machine weight	kg	-	17645	17880	18136	-	18372
Ground bearing pressure	kg/cm ²	-	0.46	0.4	0.36	-	0.32
HD T.A.B.							
Machine weight	kg	-	18144	18379	18635	-	18871
Ground bearing pressure	kg/cm ²	-	0.48	0.41	0.37	-	0.33
LC Monoboam Dozer							
Machine weight	kg	16438	16851	16859	-	-	-
Ground bearing pressure	kg/cm ²	0.57	0.49	0.42	-	-	-
LC T.A.B. Dozer							
Machine weight	kg	16938	17151	17359	-	-	-
Ground bearing pressure	kg/cm ²	0.59	0.5	0.43	-	-	-

WORKING RANGE **I45XR LC MONO**

Dipper length:		2.5m	2.7m	3.0m	
A	Maximum digging reach	mm	8345	8524	8801
B	Maximum digging reach (on ground)	mm	8202	8384	8666
C	Maximum digging depth	mm	5574	5773	6072
D	Maximum digging height	mm	9152	9273	9473
E	Maximum dumping height	mm	6674	6796	6997
F	Maximum vertical wall cut depth	mm	5108	5306	5602
G	Minimum swing radius	mm	2080	2381	2441
	Bucket rotation	degrees	182	182	182
	Maximum dipper tearout	kN	64.6 kN	63.2 kN	58.7 kN
	Maximum bucket tearout	kN	104.5 kN	104.5 kN	104.5 kN

WORKING RANGE **I45XR HD MONO**

Dipper length:		2.5m	2.7m	3.0m	
A	Maximum digging reach	mm	8345	8524	8801
B	Maximum digging reach (on ground)	mm	8183	8365	8647
C	Maximum digging depth	mm	5475	5674	5973
D	Maximum digging height	mm	9251	9372	9572
E	Maximum dumping height	mm	6773	6895	7096
F	Maximum vertical wall cut depth	mm	5009	5207	5503
G	Minimum swing radius	mm	2080	2381	2441
	Bucket rotation	degrees	182	182	182
	Maximum dipper tearout	kN	64.6 kN	63.2 kN	58.7 kN
	Maximum bucket tearout	kN	104.5 kN	104.5 kN	104.5 kN





Proud to stock a number of JCB ranges including:

TRACKED EXCAVATORS

TELEHANDLERS

SITE DUMPERS

TANDEM ROLLERS

GENERATORS

ROCKET
RENTALS

For more information, visit our website at www.rocketrentals.co.uk

For plant hire services in the Gloucester area, get in touch with the team at Rocket Rentals Ltd. on:

Plant and Access Hire
01453 51 95 51
hire@rocketrentals.co.uk

Tool Hire
01453 51 94 51

Accounts
01453 51 95 51
accounts@rocketrentals.co.uk